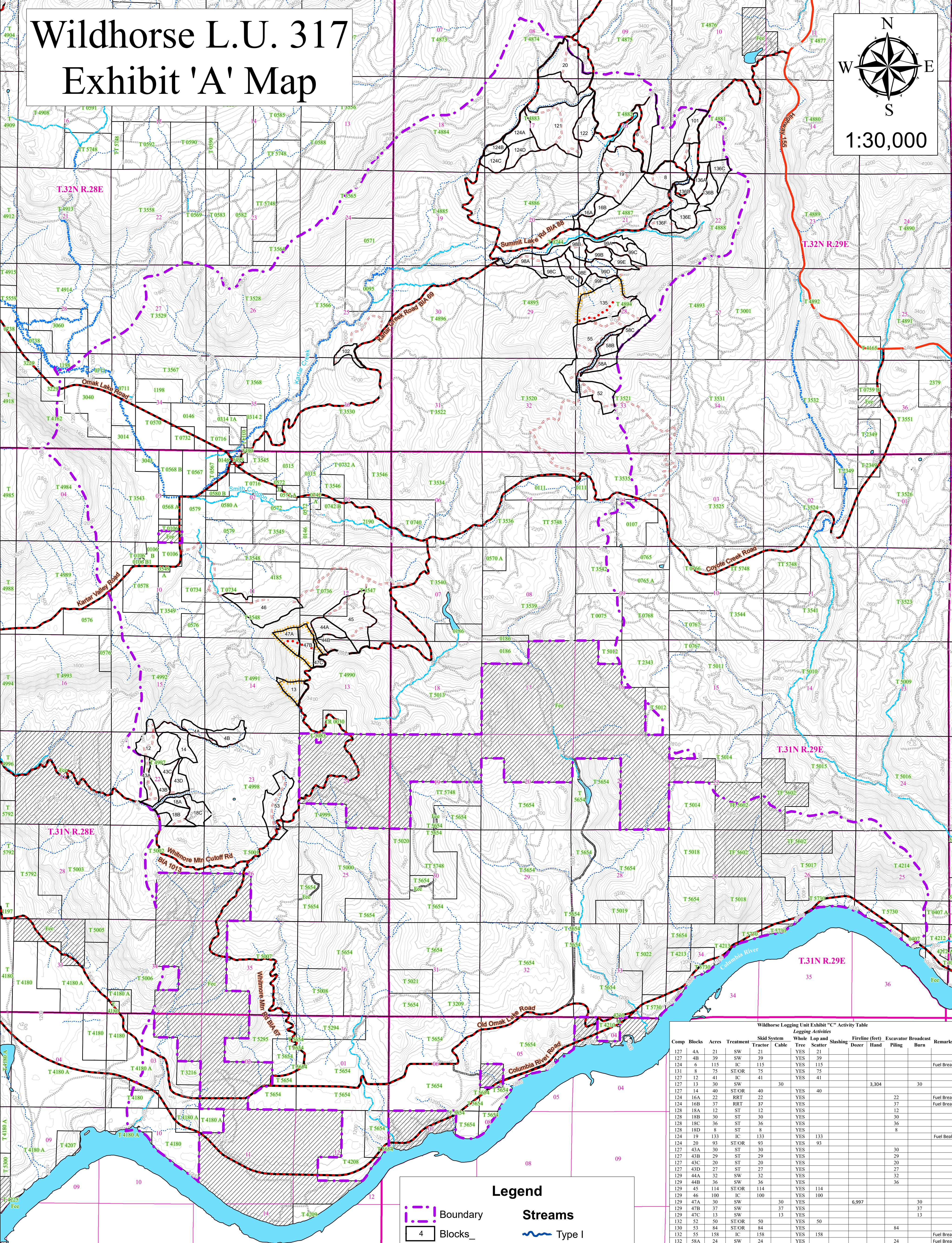
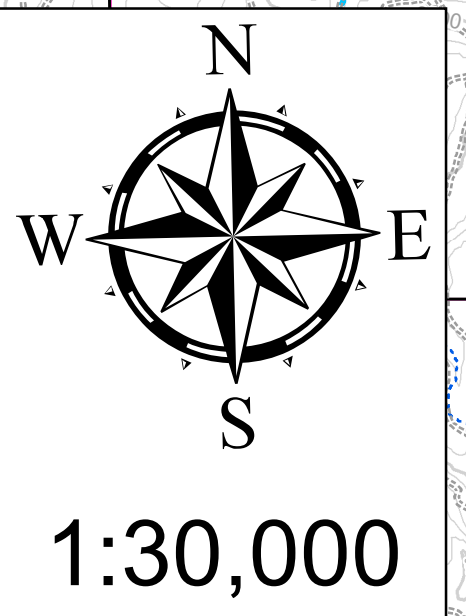
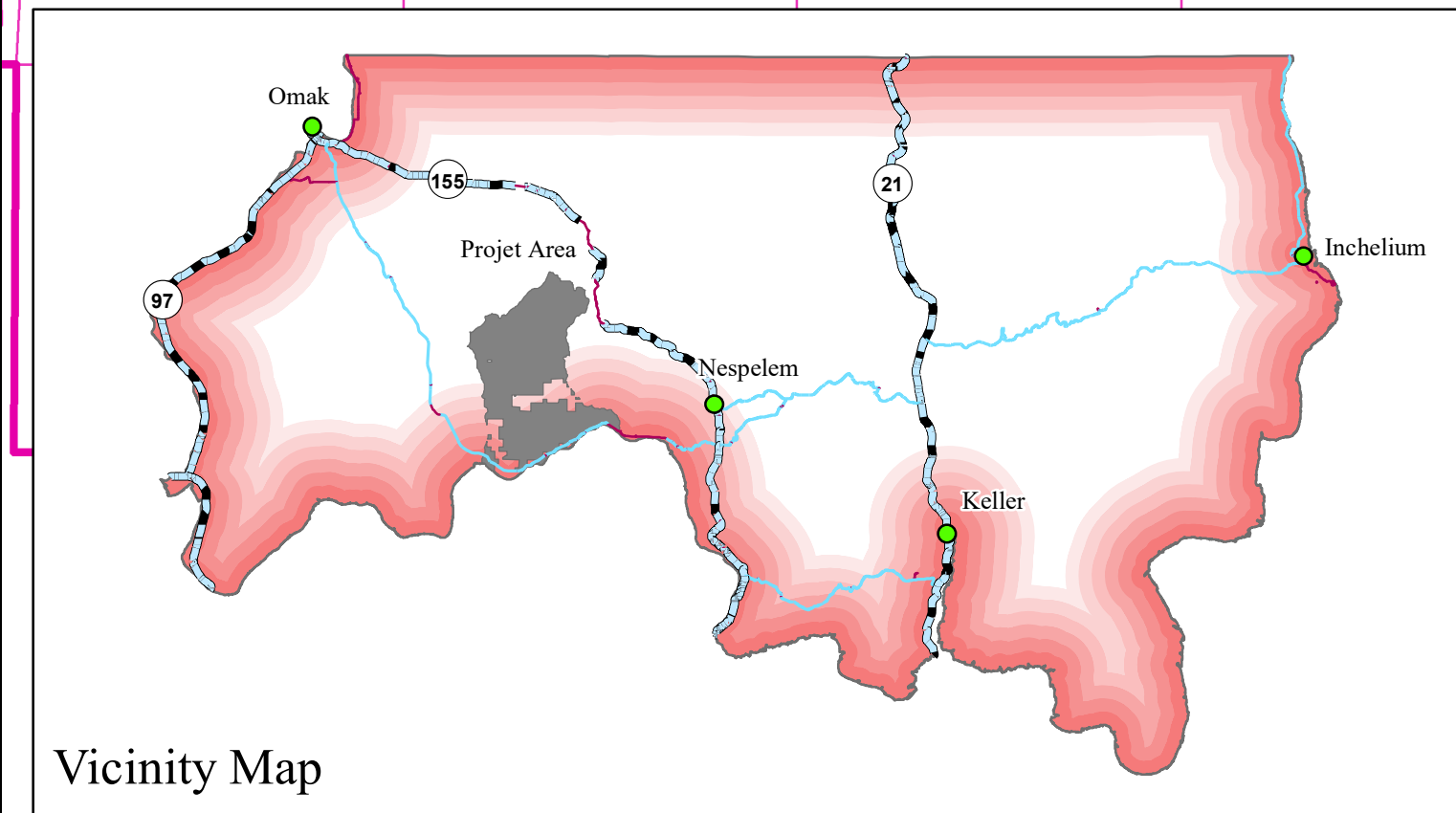


Wildhorse L.U. 317 Exhibit 'A' Map



Confederated Tribes of the Colville Reservation/Colville Tribal Forestry/Omak-Nespelem Forestry Presales Department



Legend

- Boundary**: Dashed purple line
- Blocks**: Numbered box (4)
- Sections**: Numbered box (04)
- Contours**:
 - 200 ft. (solid line)
 - 40 ft. (dashed line)
- Roads**:
 - BIA; COUNTY (solid black line)
 - INACTIVE (dotted black line)
 - Proposed (dashed red line)
 - RECONSTRUCT (dashed orange line)
 - STATE (solid red line)
- Streams**:
 - Type I (solid blue line)
 - Type II (dotted blue line)
 - Type III (dashed blue line)
 - Type IV (dotted blue line)
- Columbia_River**: Solid blue line
- Lakes**: Blue shaded area
- Ownership**:
 - A 111 Allotment Trust (green box)
 - Private Fee (hatched box)
 - Tribal Fee (green box with 'FEE')
 - Tribal Reserve (green box with 'TR 0030')
 - Tribal Trust (green box with 'T 4878')
 - Fireline (dashed orange line)

Comp	Blocks	Acres	Treatment	Skid System	Whole Tree	Log and Scatter	Shashing	Fireline (feet)	Excavator	Broadcast	Remarks	
				Tractor	Cable		Dozer	Hand	Piling	Burn		
127	4A	21	SW	39	21	YES	21					
127	4B	39	SW	39	21	YES	39					
124	6	115	IC	115	YES	115					Fuel Break	
131	8	75	ST/OR	75	YES	75						
127	12	41	IC	41	YES	41						
127	13	30	SW		30			3,304		30		
127	14	40	ST/OR	40	YES	40						
124	16A	22	RRT	22	YES						Fuel Break	
124	16B	37	RRT	37	YES						Fuel Break	
128	18A	12	ST	12	YES							
128	18B	30	ST	30	YES							
128	18C	36	ST	36	YES							
128	18D	8	ST	8	YES							
124	19	133	IC	133	YES	133					Fuel Break	
124	20	93	ST/OR	93	YES	93						
127	43A	30	ST	30	YES							
127	43B	29	ST	29	YES							
127	43C	20	ST	20	YES							
127	43D	27	ST	27	YES							
129	44A	32	SW	32	YES							
129	44B	36	SW	36	YES							
129	45	114	ST/OR	114	YES	114						
129	46	100	IC	100	YES	100						
129	47A	30	SW		30	YES		6,997		30		
129	47B	37	SW		37	YES				37		
129	47C	13	SW		13	YES				13		
132	52	50	ST/OR	50	YES	50						
130	53	84	ST/OR	84	YES	84					84	
132	55	158	IC	158	YES	158					Fuel Break	
132	58A	24	SW	24	YES						Fuel Break	
132	58B	20	SW	20	YES						Fuel Break	
132	58C	28	SW	28	YES						Fuel Break	
131	98A	36	SW	36	YES						Fuel Break	
131	98B	38	SW	38	YES						Fuel Break	
131	98C	19	SW	19	YES						Fuel Break	
131	98D	25	SW	25	YES						Fuel Break	
131	98E	27	SW	27	YES						Fuel Break	
131	99A	27	SW	27	YES						Fuel Break	
131	99B	20	SW	20	YES						Fuel Break	
131	99C	32	SW	32	YES						Fuel Break	
131	99D	31	SW	31	YES						Fuel Break	
131	99E	22	SW	22	YES						Fuel Break	
131	99F	20	SW	20	YES						Fuel Break	
131	101	32	SANI	32	YES						Fuel Break	
131	102	20	ST/OR	20	YES						Fuel Break	
124	121	157	ST/OR	157	YES	157						
124	122	44	IC	44	YES	44						
124	124A	36	ST	36	YES						36	
124	124B	16	ST	16	YES						16	
124	124C	31	ST	31	YES						31	
124	124D	38	ST	38	YES						38	
131	135	107	IC	107	YES	107	1,931	599		107	Fuel Break	
131	136A	28	SW	28	YES	28						
131	136B	34	SW	34	YES	34						
131	136C	28	SW	28	YES	28						
131	136D	23	SW	23	YES	23						
131	136E	37	SW	37	YES	37						
131	136F	29	SW	29	YES	29						
Totals		2,524		2,306	218		1,359	107	8,928	3,903	926	218

© 2008 Scaevola